



**CENTRAL LOGÍSTICA  
DE HERRAJES S.A.**

## **KIT PRACTICABLE C.E.**

**BARRA PLETINA EUROPEA POLIAMIDA (METRO)**

**106462**



**CERRADERO C.E. DOBLE Ref. 1614 GR (LAVAAL)**

**106505**

200 unid./caja



**ENCUENTRO DOBLE REF. 3006 (C.E.)**

**102788**



**ENCUENTRO SIMPLE ZAMAK Ref. 4202.1 (C.E.)**

**106747**



**EQUIPO PRACTICABLE 1 HOJA CE REF. CR 3001 (A.403**

**98257**

50 unid./caja



**EQUIPO PRACTICABLE 2 HOJAS CE REF. 13000091**

**106261**

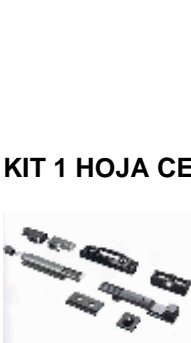
100 unid./caja



**JGO CONEXION DE CREMONA PRACT. DE SIGENIA**

**108663**

1 unid./caja



**KIT 1 HOJA CE 473**

**98553**

20 unid./caja



**CERRADERO C.E. DOBLE REG. Ref.110501 (1614 GR)**

**98632**

200 unid./caja



**CIERRE TERMINAL 33 REF. 212004**

**105090**

100 unid./caja



**ENCUENTRO SIMPLE 3005 INOX (C.E.)**

**102787**



**EQUIPO PRACTICABLE 1 HOJA CE REF. 13000044**

**106260**

150 unid./caja



**EQUIPO PRACTICABLE 2 HOJA CE REF. A4032.67 (MET.**

**106824**



**JGO CONEXION DE CREMONA FALLEBA REF. 3003 (C.E**

**102573**

200 unid./caja



**JGO. CONEXION CREMONA 1568-Z5 (METALICO) C.E.**

**021220083**

50 unid./caja



**KIT APERTURA EXTERIOR REF. 6255 S/TORNILLOS**

**105044**

50 unid./caja





**CENTRAL LOGÍSTICA  
DE HERRAJES S.A.**

## **KIT PRACTICABLE C.E.**

**KIT FIJACION Ref. 1827A CREMONA RAMSES**



**98868**

20 unid./caja

**KIT PARA VENTANA A LA FRANCESA Ref. 1679**

**021220096**

50 unid./caja

**KIT PRACTICABLE 1H. CE Ref. 07K1H**



**108677**

50 unid./caja

**KIT PRACTICABLE 1H. CE TERMINAL PUNTA MET. D6**

**022460120**



50 unid./caja

**KIT PRACTICABLE 2H. Ref. 07K2H**

**108633**



50 unid./caja

**KIT S/MARINA GUIADO REF. 1K0021 (A3104000240-UDA)**

**104959**

50 unid./caja

**MECANISMO PRACTICABLE E35 REF. 6-25948-37-0-1 (9C**

**104373**

**MECANISMO PRACTICABLE E40 REF. 6-25948-42-0-1 (9C**

**021060071**

**PERNIO UNION MICRO 16 mm. (Ref. F-212 ZINCADO)**

**98666**



40 unid./caja

**PERNIO UNION MICRO 22 mm (Ref. F-212 ZINCADO)**

**99216**



40 unid./caja

**PERNIO UNION MICRO 27 mm. (Ref. 6425)**

**104345**



40 unid./caja

**PERNIO UNION MICRO 32 mm. REF. 1013 (BULON)**

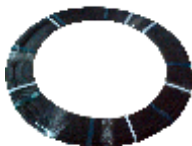
**102943**



200 unid./caja

**PLETINA EUROPEA POLIAMIDA 512344431000**

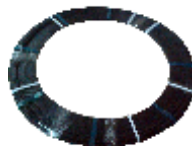
**100459**



100 unid./caja

**PLETINA EUROPEA POLIAMIDA C/CARTON 512344431000**

**102393**



100 unid./caja

**PLETINA POLIAMIDA CE NEGRO Ref. A2010.2A (ROLLO**

**108684**

1 unid./caja

**TAPON PARA TERMINAL FALLEBA 3004**

**104139**



**CENTRAL LOGÍSTICA  
DE HERRAJES S.A.**

## **KIT PRACTICABLE C.E.**

**TERMINAL DE PLETINA C.E. REF. 4069 (PUNTERO)**

**102331**



100 unid./caja

**TERMINAL DE PLETINA C.E. REF. 4092 (6 mm) NEGRO**

**104561**

100 unid./caja

**TERMINAL PLETINA EUR. 3016 INOX (18 mm)**

**98017**



100 unid./caja

**TERMINAL PLETINA REF. 3004 (C.E.)**

**102786**

